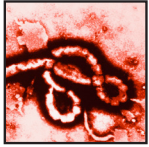


FilmArray® Global Fever Panel - RUO



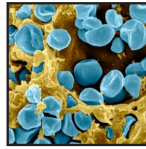
For Research Use Only.
Not for use in diagnostic procedures.

1 Test. 19 Targets. All in About an Hour.



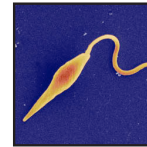
Viruses

Chikungunya virus
Crimean-Congo hemorrhagic fever virus
Dengue virus
Ebola virus
Lassa virus
Marburg virus
West Nile virus
Yellow fever virus
Zika virus



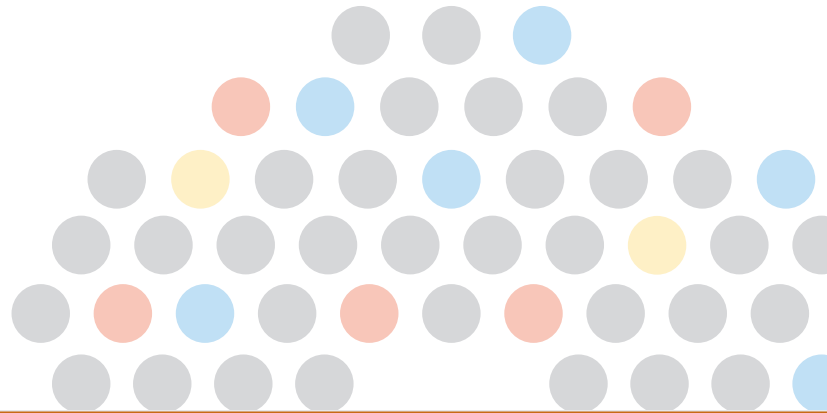
Bacteria

Bacillus anthracis
Francisella tularensis
Leptospira spp.
Salmonella enterica serovar Typhi
Salmonella enterica serovar Paratyphi A
Yersinia pestis



Protozoa

Leishmania spp.
Plasmodium spp.
P. falciparum
P. vivax/ovale



1
Hour

Identify 19 Targets from Whole Blood in About 1 Hour

The RUO FilmArray Global Fever Panel tests for a comprehensive list of 6 bacterial, 9 viral and 4 protozoan targets directly from whole blood. With just one test you can identify these targets in about an hour with only 2 minutes of hands-on time.



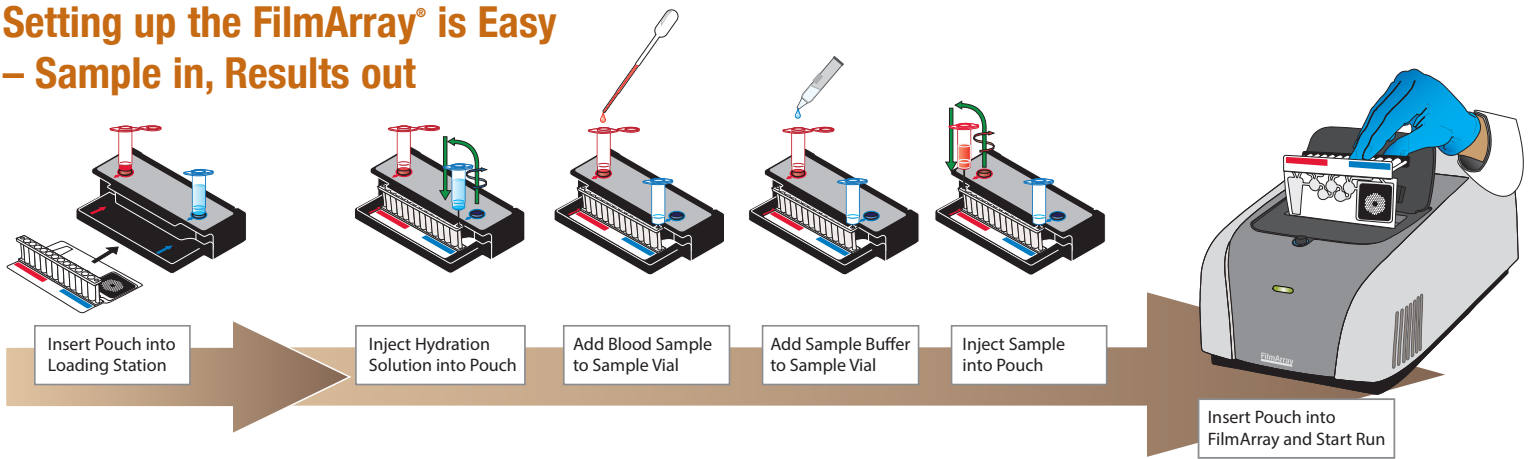
- **Fully Automated:** Sample prep, amplification, identification, and reporting.
- **Single Instrument Integration:** Minimal equipment and consumables.
- **Freeze-dried Reagents:** Room temperature stable.



If you are interested in a free, no obligation demonstration of the FilmArray in your laboratory visit www.BioFireDefense.com or call 801-262-3592.

**FREE
Demo!**

Setting up the FilmArray® is Easy – Sample in, Results out



Fully Automated Operation

The FilmArray pouch contains all the required reagents for sample preparation, reverse transcription-PCR, PCR, and detection in a freeze-dried, room temperature stable format. To set-up a run, the operator injects hydration solution and the unknown sample into the pouch; the FilmArray does the rest.

First, the FilmArray extracts and purifies all nucleic acids from the unknown sample. Next, the FilmArray performs a nested multiplex PCR. During the first-stage of PCR, the FilmArray performs a single, large volume, multiplexed reaction. Last, individual singleplex second-stage PCR reactions detect the products from the first stage PCR.

Using endpoint melting curve data, the FilmArray software automatically generates a result for each target.

Easy-to-Read Reporting

FilmArray® Global Fever Panel - RUO		BIO FIRE	
www.BioFireDefense.com			
Run Summary			
Sample ID: 017728-KCPR-0291	Run Date: 4 Jan 2017 4:10 PM	Instrument: 2FA4032	
Operator: Anonymous	Run Status: Completed	Protocol: Whole Blood	
	Controls: Passed		
Dengue virus Detected			
Report the Results			
Results Summary			
Detected		Not Detected	
Dengue virus		Chikungunya virus Crimean-Congo hemorrhagic fever virus Ebola virus Lassa virus Marburg virus West Nile virus Yellow fever virus Zika virus Bacillus anthracis Francisella tularensis Leptospira spp. Salmonella enterica serovar Paratyphi Salmonella enterica serovar Typhi Yersinia pestis Leishmania donovani complex Plasmodium spp. Plasmodium falciparum Plasmodium vivax/ovale	
Pouch Summary			
Pouch	Global Fever Panel RUO v3.0	Serial #	D01126235
		Lot #	125485

Kit Specifications

Sample Handling

Kit	Global Fever Panel - RUO
Part No:	DFA2-ASY-0003
Sample Types	Whole Blood
Sample Volume	~0.2 mL (200 µL)
Tests per Kit	6 Pack Kit

Reagents

- Freeze-dried in durable plastic pouches
- Room temperature storage

Instrument Specifications

Footprint

- Weight: 6.6 kg (14.6 lbs)
- Size: 25.4 x 39.3 x 16.5 cm (10 x 15.5 x 6.5 in.)

Power Requirements

- 100 – 240VAC 50 – 60Hz 1.2A input

Performance Parameters

- Hands on time: Approx. 2 minutes
- Run turn-around time: Approx. 50 minutes

Environmental Specification

- Operating: 15 °C to 30 °C at 20 to 80% humidity
- Storage: -30 °C to 65 °C | Shipping: -30 °C to 70 °C

Software (Pre-loaded on supplied laptop)

- Windows-based instrument control and data analysis software
- Barcode reader for data input
- Automated qualitative analysis and reporting
- Separate advanced analysis software