

RAZOR® EX – Running Pouches without Barcodes

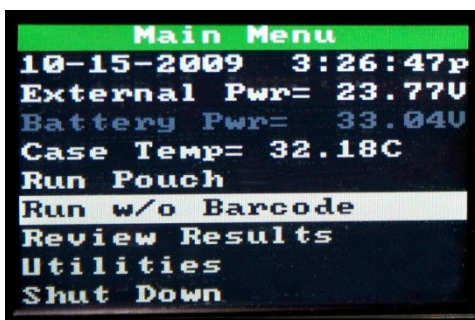
TECHNICAL NOTE

Background

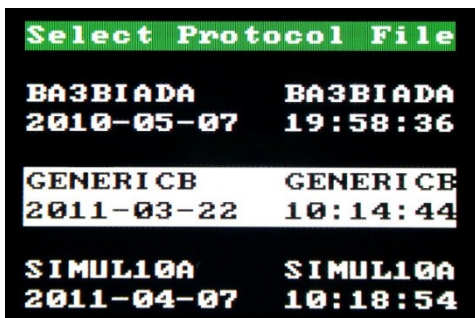
When preparing to run a reagent pouch on the RAZOR EX, if the protocol (square) barcode is not available or not functioning, users have the option of selecting a generic protocol to run any pouch configuration on the RAZOR EX. Alternatively, if the barcode reader on the instrument is damaged or the serial barcode (rectangular) on the reagent pouch is not reading, the Run w/o Barcode feature may be utilized to initiate a run. See images 4 and 5 for description and location of each barcode type.

Run w/o Barcode

1. From the Main Menu, select **Run w/o Barcode**. This will bring up the **Select Protocol File** screen.

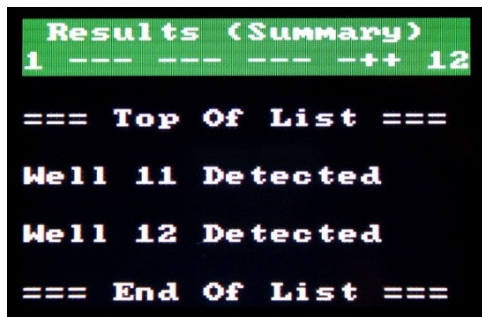


2. Scroll through the available protocols and select the **GENERICB** protocol to run a generic protocol. If the serial barcode on the reagent pouch is not scanning, select the appropriate protocol for the pouch type.



3. Once the protocol has been selected, the user will be taken to the **Loading Instruction** screen. Follow the step instructions on the display to prepare and load the sample into the RAZOR EX.

WARNING: The bar code on each pouch contains critical run information including slot label identifiers and lot numbers which are extremely valuable for troubleshooting. Target assay names in each well will not be displayed in the results. The software will still make +/- calls, but it will be up to the operator to determine which calls correspond to each well in the pouch as shown below. Running a pouch without a protocol barcode should be used as a last resort.

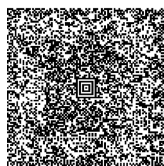


Note: Results (Summary) screen of The Ten Target pouch run without protocol barcode. Wells 11 and 12 correspond to inhibition and positive controls in this pouch format.

Bar Code Examples

Protocol Barcode

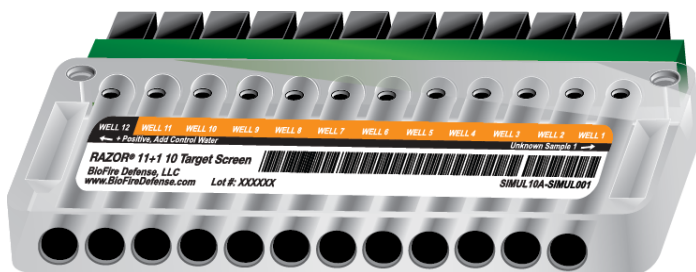
The protocol barcode is square in shape and contains the PCR protocol specific to each pouch configuration. It is located on the side of the kit box, and on the assay card and in the RAZOR manual.



Example: Protocol Barcode

Serial Barcode

The serial barcode is rectangular in shape. It is printed on the front of the pouch and contains the serial ID of the pouch, meta-calls, and pouch configuration.



Example: Serial Barcode

TECHNICAL NOTE

Technical Support Contact Information

BioFire Defense is dedicated to providing the best customer support available. If you have any questions or concerns about this process, please contact the BioFire Defense Support Team for assistance.

BioFire Defense Support

Email: support@biofiredefense.com

Phone: 1-801-262-3592

Fax: 1-801-447-6907



TECHNICAL NOTE