

FilmArray® 2.0 Instrument Software Pouch Module Guide



 **BioFire Defense, LLC**
79 West 4500 South, Suite 14
Salt Lake City, Utah 84107 USA
+1-801-262-3592 | www.BioFireDefense.com

Customer and Technical Support

Reach Us on the Web

<http://www.BioFireDefense.com>

Reach Us by E-mail

support@biofiredefense.com

Reach Us by Phone

8 a.m. to 5 p.m. - MST

1-801-262-3592 - US and Canada
IDD Prefix-1-801-262-3592 - Intl

Reach Us by Fax

1-801-447-6907 - US and Canada
IDD Prefix-1-801-447-6907 - Intl

.....
FilmArray 2.0 Software Pouch Module Guide
Printed in the United States of America

FLM2-PRT-0245-01, March 2017

© Copyright 2008–2017 BioFire Defense, LLC
All rights reserved.

The information contained in this document is subject to change without notice. No part of this document may be reproduced or transmitted in any form or by any means, electronic or mechanical, for any purpose, without the express written permission of BioFire Defense, LLC.

FilmArray Software, Detector, and Metacall software modules © 2002–2017 BioFire Defense, LLC.

BioFire, the BioFire logo, FilmArray are trademarks of BioFire Diagnostics, LLC or BioFire Defense, LLC and are registered trademarks of BioFire Diagnostics, LLC or BioFire Defense, LLC in the United States. All other names of products and brands appearing in this manual are trademarks or registered trademarks of their respective owners.

The purchase of this product includes a limited, nontransferable license under specific claims of one or more U.S. patents as listed on BioFire Defense's Web site (<http://www.biofiredefense.com/LegalNotices/>) and owned by the University of Utah Research Foundation and/or BioFire.

Introduction


In order to run a FilmArray pouch with the FilmArray 2.0 instrument, that specific Pouch Module must be installed into the FilmArray system software.

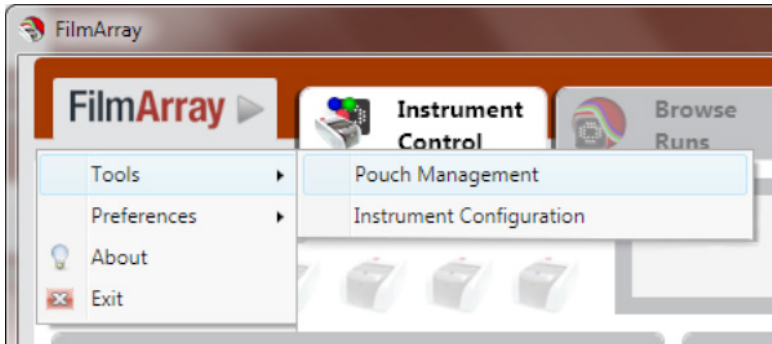
Installing a Software Pouch Module

Follow the steps below to install the Pouch Module on a FilmArray laptop.

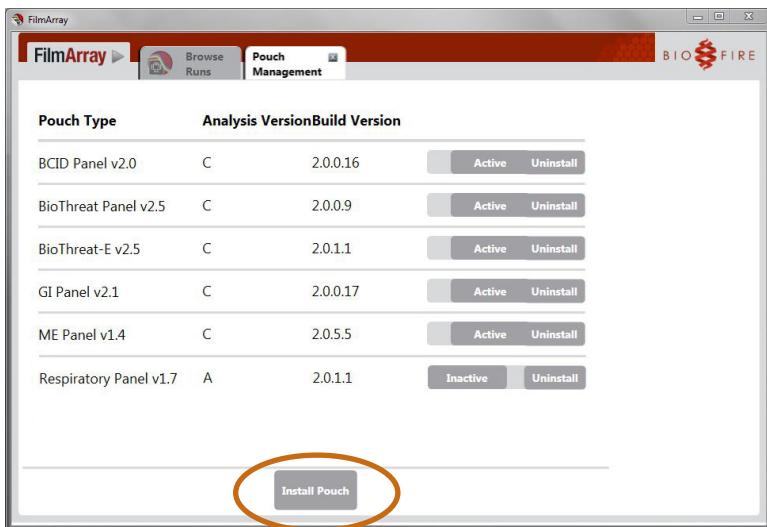
1. Contact BioFire Defense Customer Support at support@biofiredefense.com to obtain the requested Pouch Module.

If needed, burn the Pouch Module to a writable CD using any commercial CD writing software. Insert the CD with the Pouch Module into the appropriate drive on the computer.

2. Open the FilmArray Software from the desktop icon (if not already open). 
3. Navigate to the 'FilmArray' menu in the top left of the window.
4. Click 'Tools' > 'Pouch Management'.

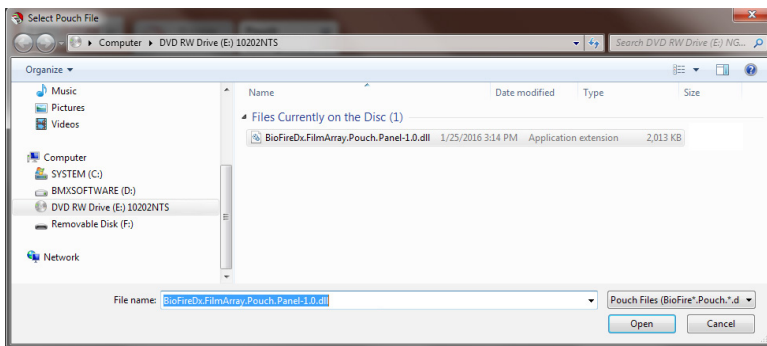


5. Click 'Install Pouch'.



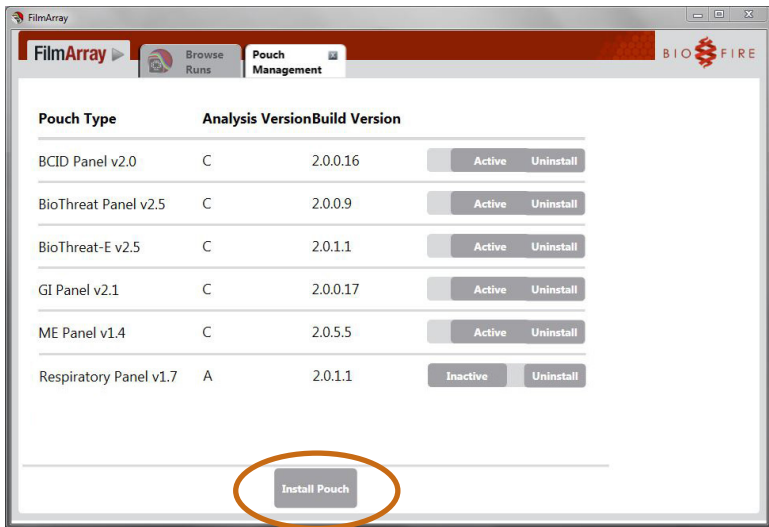
Note: The list of available pouches on your system may differ than the picture above.

6. Navigate to the CD drive in the open file dialog.
7. Click the Pouch Module to be installed.
8. Click 'Open'.



9. The Pouch Module will display and the 'Active' box will be checked when it has successfully loaded.

10. Verify the Build Version is correct and matches the Module that was sent by BioFire Defense Customer Support.



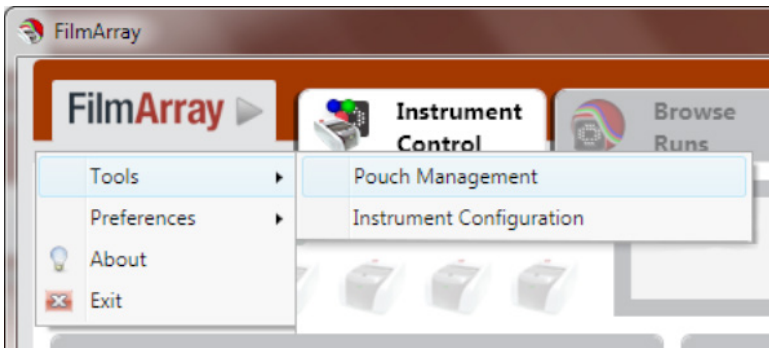
Note: The list of available pouches on your system may differ than the picture above. Multiple Build Versions of the same Pouch Module can be loaded at the same time in the FilmArray Software. If you have questions or concerns about which build is the most current, contact BioFire Defense Customer Support.

11. Eject the install CD from the computer.
12. The Pouch Module has now been installed and is available for use in the FilmArray software.

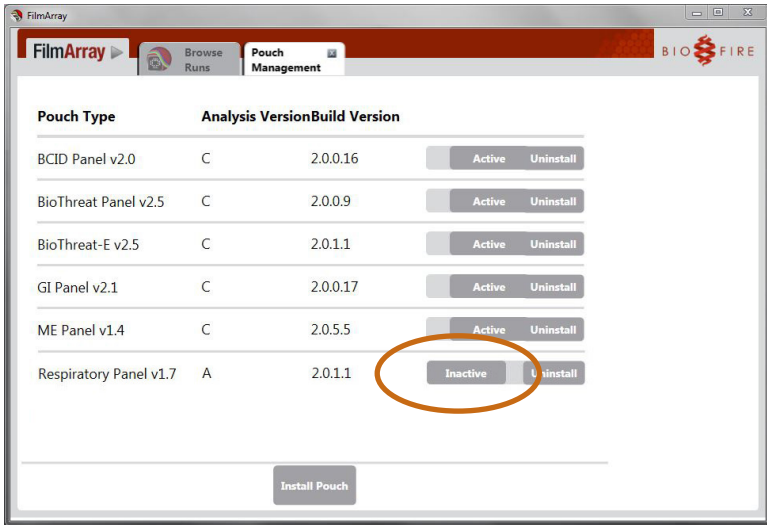
Inactivating a Software Pouch Module

Follow the steps below to remove a Pouch Module from the Pouch Type drop-down menu in the Instrument Control window of the FilmArray Software. Additionally, the bar code reader will not scan an inactivated pouch. Inactivating a Pouch Module does not remove the module from the software.

1. Open the **FilmArray Software** from the desktop icon (if not already open).
2. Navigate to the '**FilmArray**' menu in the top left of the software.
3. Click '**Tools**' > '**Pouch Management**'.



4. To the right of each of the installed Pouch Modules is a slide bar which allows you to inactivate a Pouch Module. Simply click the '**Active**' slide bar and the software will slide it to '**Inactive**'.

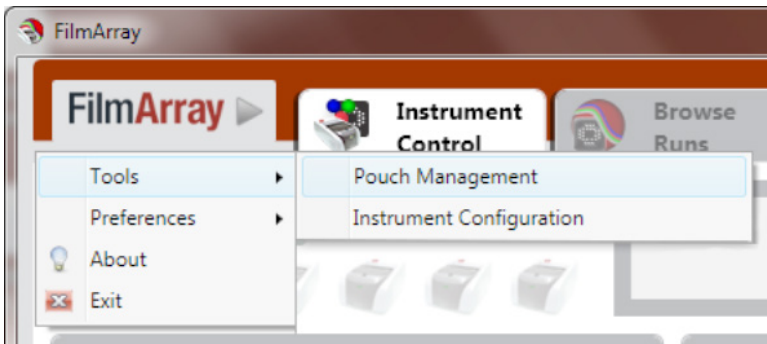


Note: To make a Pouch Module **'Active'**, simply click on an **'Inactive'** pouch slide bar and the software will slide it to **'Active'**.

Uninstalling a Software Pouch Module

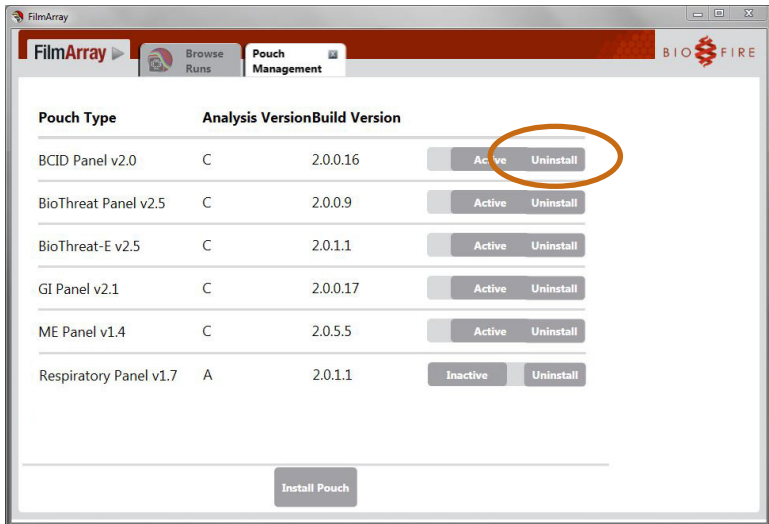
A Pouch Module may need to be uninstalled if it is being updated to a newer module version. It may also need to be removed if the Pouch Module is an ITAR regulated module and the computer is being shipped.

1. Open the **FilmArray Software** from the desktop icon (if not already open).
2. Navigate to the **'FilmArray'** menu in the top left of the software.
3. Click **'Tools' > 'Pouch Management'**.

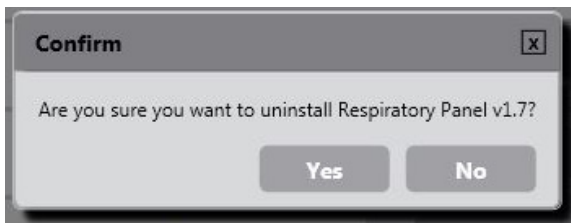


- To the right of each of the installed Pouch Modules, and to the right of the 'Active/Inactive' slide bar, there is an 'Uninstall' button.

Click on the 'Uninstall' button to removed the desired Pouch Module.



- A confirmation window will pop-up notifying you of the Pouch Module that will be uninstalled. Click 'Yes'.



- The Pouch Module has now been uninstalled from the FilmArray software.





**79 West 4500 South, Suite 14,
Salt Lake City, Utah 84107 USA
1-801-262-3592 | www.BioFireDefense.com**

*For additional information regarding our
products and applications, please contact
our Customer Support Department
at BioFire Defense.*

