

Installing the BioFire® Global Fever Panel Pouch Module on BioFire® FilmArray® Systems

Introduction

In order to run the BioFire Global Fever Panel on a BioFire FilmArray system, a specific pouch module must be installed.

Pouch Module Availability

The software needed to install the BioFire Global Fever Panel v2.1 Pouch Module can be obtained by downloading it directly from the BioFire Defense website or via a software disk provided by BioFire Defense.

To download the software from the website, please follow the instructions below.

1. Insert a USB drive into the USB port or place a writable CD into the disk drive of a computer connected to the internet.
2. Go to BioFire Defense's Global Fever web page located at: <https://www.biofiredefense.com/globalfeverpanel/>
3. Under the Software section, select the link for the BioFire Global Fever Panel – IVD Software Pouch Module for v2.1.


Software

BioFire Global Fever Panel – IVD Software Pouch Module for v2.1 (2.1.0.10B)

TECHNICAL NOTE

4. Fill out the web form.

BioFire® Global Fever Panel Software Pouch Module – Download Form



In order to run a FilmArray pouch with the BioFire FilmArray instrument, a specific Pouch Module must be installed into the system software.

Fill out the form to download the BioFire Global Fever Panel v2.1 Pouch Module for the BioFire FilmArray Software.

[Download the Pouch Module Installation Instructions](#)

Software Updated: April 2023

First Name* Last Name*

Institution* Department

Address

Street Address

Address Line 2

City State / Province / Region

ZIP / Postal Code Country

Phone Email*

CAPTCHA

I'm not a robot

reCAPTCHA
Privacy - Terms

Submit

TECHNICAL NOTE

5. Download the file by clicking “BioFire Global Fever v2.1 Pouch Module”.
6. Extract the files from the downloaded .zip folder and save to the USB drive or CD.

Installing the Global Fever Panel Pouch Module for the BioFire FilmArray 2.0 System

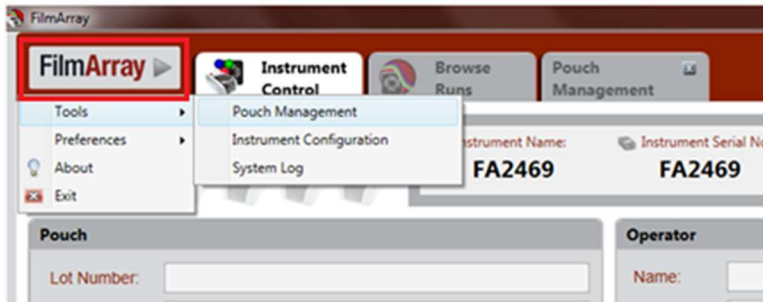
Using the downloaded file from the internet or the software disk, complete the following steps to install the new pouch module on each BioFire 2.0 computer.

1. Insert the USB drive or CD containing the BioFire Global Fever v2.1 Pouch Module into a USB port or disk drive on the BioFire 2.0 computer.

2. Open the FilmArray software from the desktop icon.

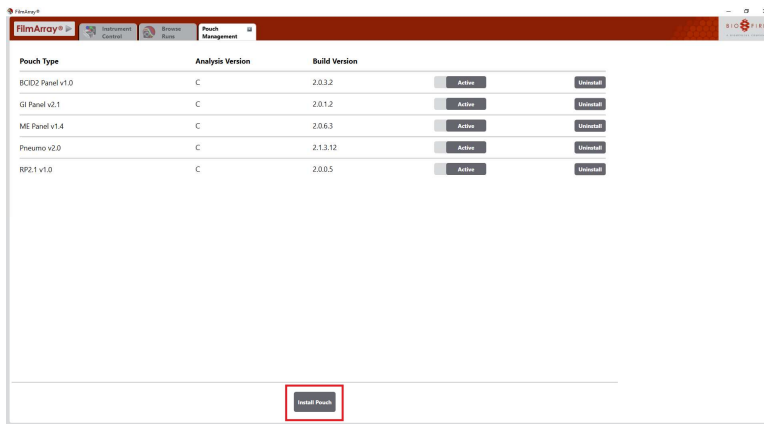


3. Navigate to the 'FilmArray' menu in the top left corner of the software.



Click 'Tools'. Click 'Pouch Management'.

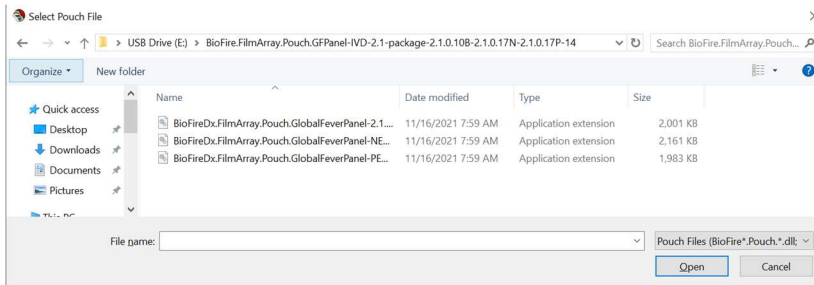
4. Click 'Install Pouch'.



5. Navigate to the USB or disk drive where the pouch modules have been saved.
6. Select the desired pouch module file.

TECHNICAL NOTE

7. Click 'Open'.



NOTE: The BioFire Global Fever v2.1 Panel requires three .dll files which must be installed one at a time.

8. Verify the pouch module builds are correct. The BioFire Global Fever v2.1 has three analysis packages with build versions that must match the screenshot below. If older builds were previously installed, they will automatically be replaced.

Pouch Type	Analysis Version	Build Version	Active
BCID2 Panel v1.0	C	2.0.3.2	Active
BioThreat Panel v2.5	C	2.0.0.9	Active
BioThreat-E v2.5	C	2.0.1.1	Active
COVID-19 Test v1.1	C	2.1.0.10	Active
	NEC	2.1.0.8	Active
GF Panel - IVD v2.1	PEC	2.1.0.8	Active
	B	2.1.0.10	Active
	N	2.1.0.17	Active
	P	2.1.0.17	Active

NOTE: If the build version doesn't match, the process was not successful. Please contact technical support for assistance.

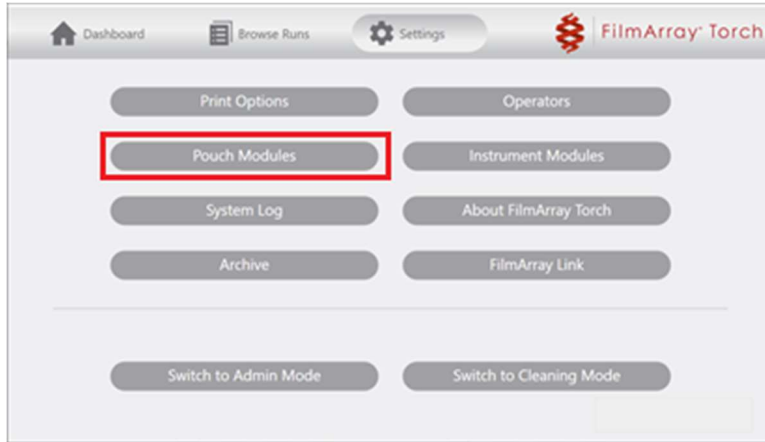
9. Eject the USB or disk drive from the computer.

TECHNICAL NOTE

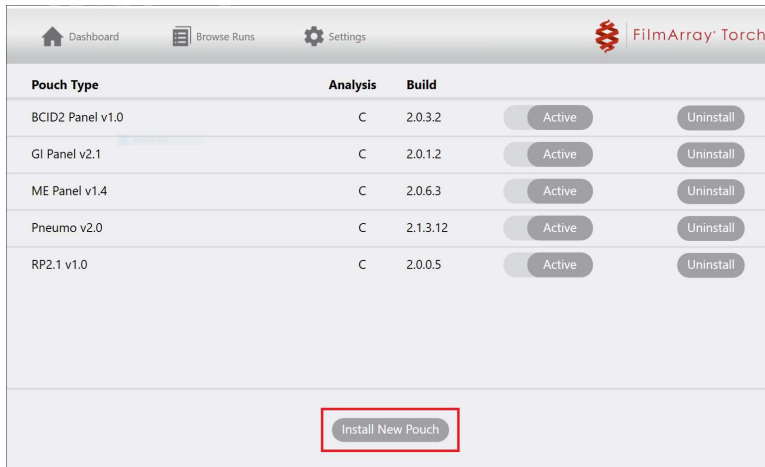
Installing the BioFire® Global Fever Panel Pouch Module for the BioFire® Torch System

To install the BioFire Global Fever v2.1 Pouch Module on a BioFire Torch System base:

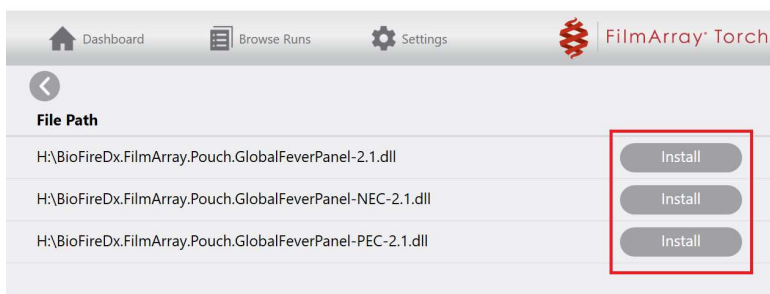
1. Insert the removable drive containing the installation file into the BioFire Torch System.
2. Select the **'Pouch Modules'** option on the Settings screen.



3. Select **'Install New Pouch'**.



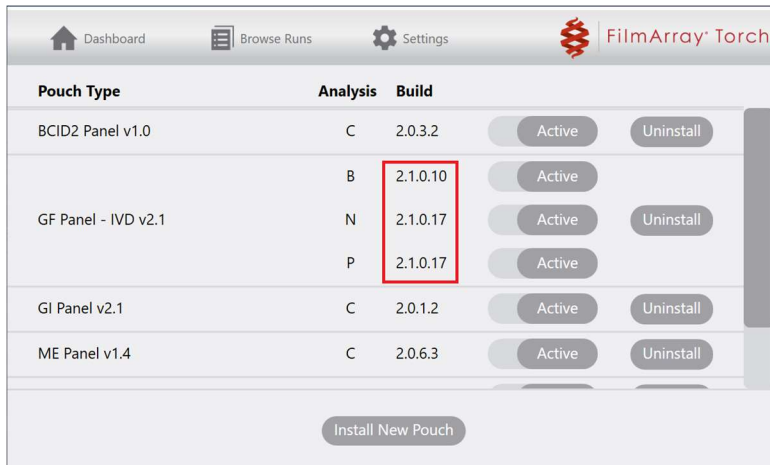
4. Select the **'Install'** option associated with the desired pouch module.



TECHNICAL NOTE

NOTE: The software will display available installation files in the root directory of the connected removable drive; files in subfolders are not displayed. A list of installed modules will be displayed once a file has been installed.

5. Verify the pouch module builds are correct. The BioFire Global Fever Panel v2.1 has three analysis packages with build versions that must match the screenshot below. If older builds were previously installed, they will automatically be replaced.



Pouch Type	Analysis	Build	Active	Uninstall
BCID2 Panel v1.0	C	2.0.3.2	Active	Uninstall
GF Panel - IVD v2.1	B	2.1.0.10	Active	
	N	2.1.0.17	Active	Uninstall
	P	2.1.0.17	Active	
GI Panel v2.1	C	2.0.1.2	Active	Uninstall
ME Panel v1.4	C	2.0.6.3	Active	Uninstall

Install New Pouch

NOTE: If the build version doesn't match, the process was not successful. Please contact technical support for assistance.

6. Remove the removable drive from the system base.

Technical Support Contact Information

BioFire Defense is dedicated to providing the best technical support available. If you have any questions or concerns about this process, please contact the BioFire Technical Support Team for assistance.

General Information

Email: support@biofiredefense.com

Phone: 1-801-262-3592

Fax: 1-801-447-6907



TECHNICAL NOTE