



1. Calculation based on running the BIOFIRE® SPOTFIRE® Respiratory Panels (~ 15 minutes) in an 8-hour shift.

15

Minutes

Results in about 15 Minutes

Requires minimal benchtop space

With a footprint slightly larger than a sheet of paper, the SPOTFIRE System easily fits on most lab benches.

Scalable throughput

The system can be vertically scaled up to 4 modules, enabling labs to meet their unique testing needs.

Easy-to-use

The streamlined workflow and intuitive system interface have been designed to be used by any healthcare professional, in any setting.

Seamless connectivity

The system interfaces with data management systems enabling automatic data transfer to ensure data quality and enable workflow flexibility.

Optimize Operations

Simplified workflow and quick turnaround time enables rapid and accurate answers during the patient visit, while reducing the need for callbacks or expensive and slow send-out testing.

Easy-to-use solution enables users of all skill levels to prepare and run samples.





BIOFIRE SPOTFIRE Respiratory/Sore Throat (R/ST) Panel

1 PCR TEST. UP TO 15 TARGETS. ~15 MINUTES. Based on the sample type collected, users can select either the Respiratory or Sore Throat menu.

FDA **CLEARED**
CLIA **WAIVED**

RESPIRATORY | 15 TARGETS

VIRUSES

Adenovirus
Coronavirus SARS-CoV-2
Coronavirus (seasonal)
Human metapneumovirus
Human rhinovirus/enterovirus
Influenza A virus
Influenza A virus A/H1-2009
Influenza A virus A/H3
Influenza B virus
Parainfluenza virus
Respiratory syncytial virus

BACTERIA

Bordetella parapertussis
Bordetella pertussis
Chlamydia pneumoniae
Mycoplasma pneumoniae

Overall Respiratory
Performance†
(NPS specimens):
PPA: 98.5% | NPA: 99.1%

Sample Type: Nasopharyngeal swab in 3 mL of transport media.

SORE THROAT | 14 TARGETS

VIRUSES

Adenovirus
Coronavirus (seasonal)
Human metapneumovirus
Human rhinovirus/enterovirus
Influenza A virus
Influenza A virus A/H1-2009
Influenza A virus A/H3
Influenza B virus
Parainfluenza virus
Respiratory syncytial virus

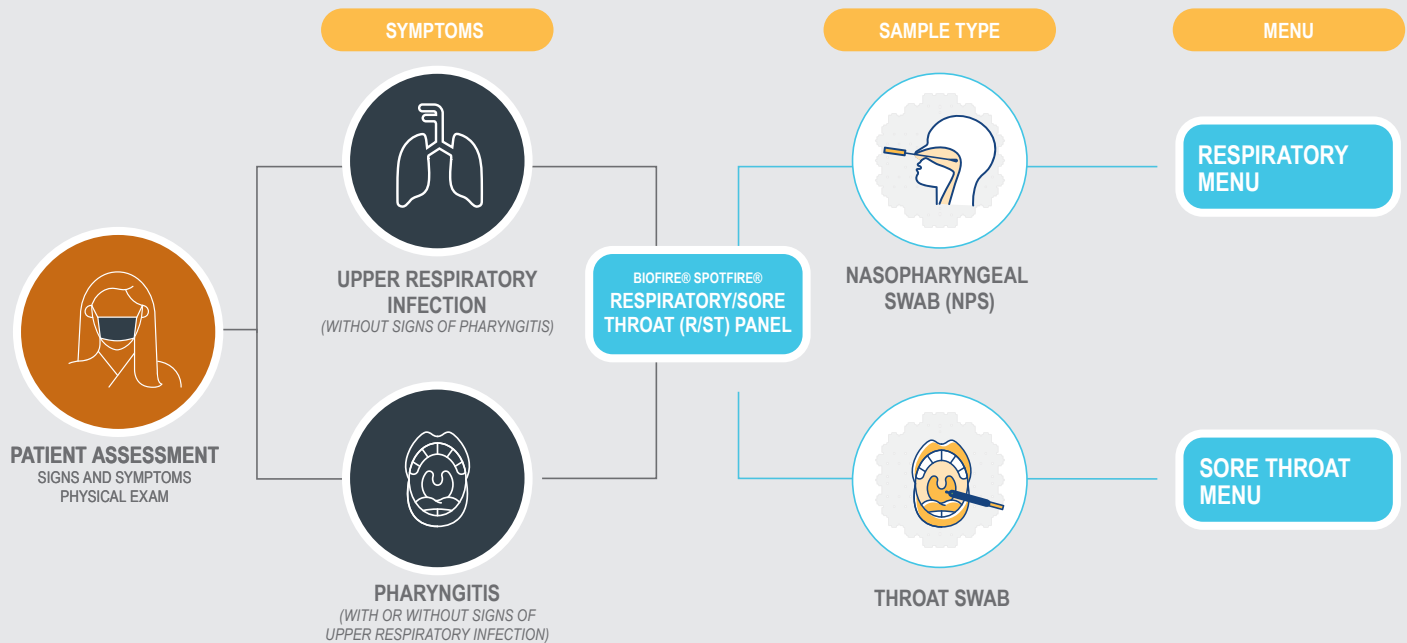
BACTERIA

Chlamydia pneumoniae
Mycoplasma pneumoniae
Streptococcus dysgalactiae
(group C/G Strep)
Streptococcus pyogenes
(group A Strep)

Overall Sore Throat
Performance†
(TS specimens):
PPA: 95.9% | NPA: 99.0%

Sample Type: Throat swab in 1 mL of transport media.

SPOTFIRE R/ST Panel Workflow



SPOTFIRE Respiratory/Sore Throat Specifications

Hands-on Time:	2 minutes
Pouch Storage Conditions:	All kit components should be stored at room temperature (15° – 25° C)
Quality Control Storage Conditions:	Positive and negative control materials should be stored at room temperature (18° – 25° C) Maine Molecular Quality Controls, Inc. Products Only.
Specimen Transport and Storage:	Room temperature for up to 4 hours (15° – 25° C), refrigerated for up to 3 days (2° – 8° C) or frozen for up to 30 days (≤ -15° C)

Ordering Information

Product Name	Quantity	Part No.
BIOFIRE SPOTFIRE Instrument Control Station	1	FAST-ASY-0001
BIOFIRE SPOTFIRE Instrument Module	1	FAST-ASY-0002
BIOFIRE SPOTFIRE Respiratory/Sore Throat Panel Kit	30-Pack	423485
BIOFIRE SPOTFIRE Respiratory/Sore Throat Panel Mini	30-Pack	424537

BioFire Defense is authorized to sell the BIOFIRE® FILMARRAY® and BIOFIRE® SPOTFIRE® Systems and Panels manufactured by its affiliate company bioMérieux to US government agencies.