



FilmArray® Food & Water Panel Quick Guide

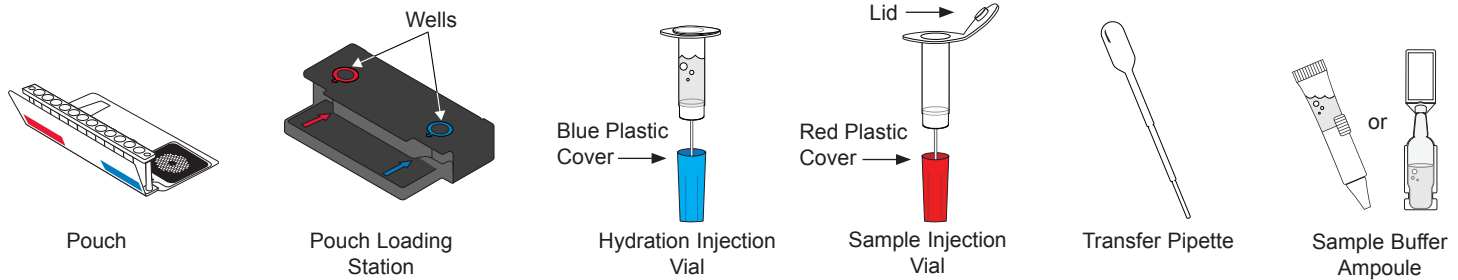
For use with FilmArray® 2.0 systems



Not For Diagnostic Use.

NOTE: Components from the Food & Water Panel kit should not be stored or used with any other kit.

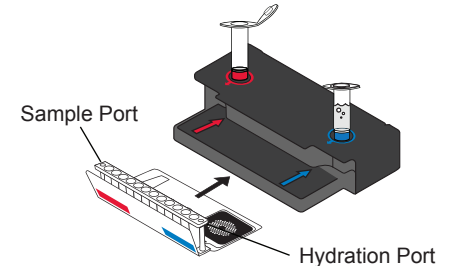
REF NGDS-ASY-0016



To avoid contamination, always wear clean gloves and work behind a protective shield.

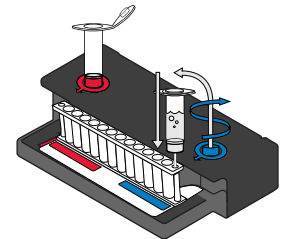
Step 1: Prepare Pouch

- Insert pouch into Pouch Loading Station.
- Place the **Sample Injection Vial** into **red well**.
- Place **Hydration Injection Vial** into **blue well**.



Step 2: Hydrate Pouch

- Unscrew **Hydration Injection Vial** from cover.
- Remove **Hydration Injection Vial**, leaving **blue plastic cover** in Pouch Loading Station.
- Insert **Hydration Injection Vial** into **Hydration Port**.
- Push down to puncture seal and wait as **Hydration Solution** is drawn into the pouch.



NOTE: Verify the pouch has been hydrated.

Step 3: Prepare Sample Mix

NOTE: Gently invert sample container until thoroughly mixed.

- Stomacher preparation should be completed before preceding.
- Use the Transfer Pipette to draw sample to the 2nd line. Add the sample to **Sample Injection Vial**.

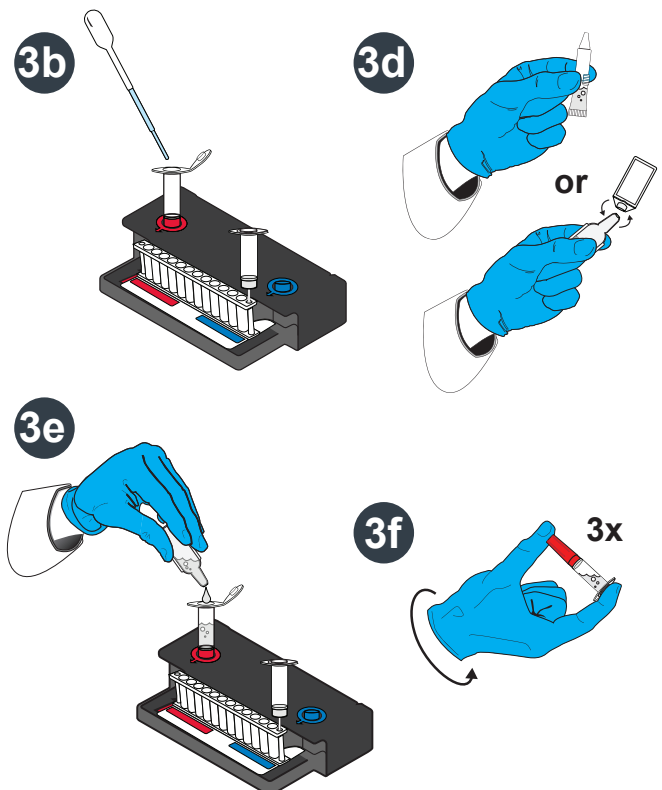
Add Sample Buffer (NOTE: There are 2 possible designs of the Sample Buffer Ampoule)

- Hold the Sample Buffer Ampoule with the tip facing up.
NOTE: Do not touch the tip of the ampoule.
- Firmly pinch textured plastic tab on the side of the ampoule until the seal snaps **or** if there is no textured tab on the side, gently twist off the plastic tab on the tip.
- Dispense Sample Buffer into **Sample Injection Vial** using a slow, forceful squeeze, followed by a 2nd squeeze.

NOTE: Avoid generating excessive foaming.

- Tightly close lid and invert the **Sample Injection Vial** 3 times.
- Return **Sample Injection Vial** to **red well** of Pouch Loading Station.

WARNING: Contact with sample buffer can cause serious eye damage and skin irritation and is harmful if swallowed.





FilmArray® Food & Water Panel Quick Guide

For use with FilmArray® 2.0 systems

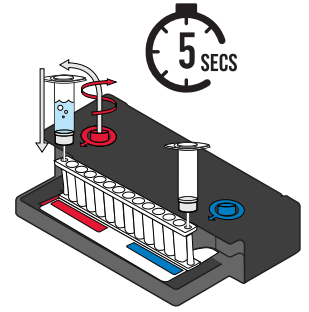


Step 4: Load Sample Mix

- Unscrew **Sample Injection Vial** from **red plastic cover**.
- Wait for **5 seconds**, then remove **Sample Injection Vial**, leaving **red plastic cover** in Pouch Loading Station.

NOTE: Waiting five seconds decreases the contamination risk.

- Insert **Sample Injection Vial** into **Sample Port**.
- Push down to puncture seal, then wait as sample mix is drawn into the pouch.



Step 5: Run Pouch

- Follow instructions on computer for starting a test.

Run Summary - Displays information about the sample and a summary of the controls and test results.

1. Run Status:

- If 'Completed', run is complete.
- If 'Incomplete', 'Aborted', or any other error message, RETEST SAMPLE.

2. Internal Controls:

- If 'Passed', results are valid.
- If 'Failed' or 'Invalid', RETEST SAMPLE.

Result Summary - Displays the test results for each organism.

3. 'Detected': Lists names of any detected organisms.

4. 'Not Detected': Lists names of organisms that were not detected.

5. 'Ø N/A', pathogen was not reported. Refer to Instruction Booklet for more information.

FilmArray® Food & Water Panel - Not for Diagnostic Use		BIO FIRE
www.BioFireDefense.com		
Run Summary		
Sample ID: SAMPLE_01	Run Date: 07 May 2019 3:48 PM	
Detected: Salmonella	Controls: Passed	
Result Summary		
Bacteria		
Not Detected	Campylobacter	
✓ Detected	Salmonella	
Not Detected	Vibrio	
Not Detected	Vibrio cholerae	
Not Detected	Yersinia enterocolitica	
Diarrheagenic E. coli/Shigella		
Not Detected	Enteropathogenic E. coli (EPEC)	
Not Detected	Enterotoxigenic E. coli (ETEC) lt/st	
Not Detected	Shiga-like toxin-producing E. coli (STEC) stx1/stx2	
Ø N/A	E. coli O157	
Not Detected	Shigella/Enteroinvasive E. coli (EIEC)	
Parasites		
Not Detected	Cryptosporidium	
Not Detected	Cyclospora cayentanensis	
Not Detected	Giardia lamblia	
Viruses		
Not Detected	Norovirus GI/GII	
Run Details		
Pouch: F&W Panel v1.0	Protocol: Food & Water v1.0	
Run Status: Completed	Operator: Dan S Van (DVan)	
Serial No.: 03587746	Instrument: FA2132	
Lot No.: 236515		

Run Details - Displays information about the pouch, protocol, run status, operator, instrument, serial number, and lot number.

NOTE: If repeated 'Error' or 'Invalid' messages are obtained, contact BioFire Defense Technical Support.