



BioThreat Panel

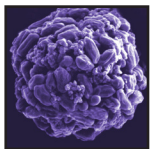
for the BIOFIRE® SPOTFIRE® and BIOFIRE® FILMARRAY® 2.0 Systems



Not for diagnostic use.

Information Sheet

1 Test. 16 BioThreat Targets. All in about an hour.



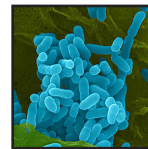
Bacteria

Bacillus anthracis
Brucella melitensis
Burkholderia mallei / *pseudomallei*
Coxiella burnetii
Francisella tularensis
Rickettsia prowazekii
Yersinia pestis



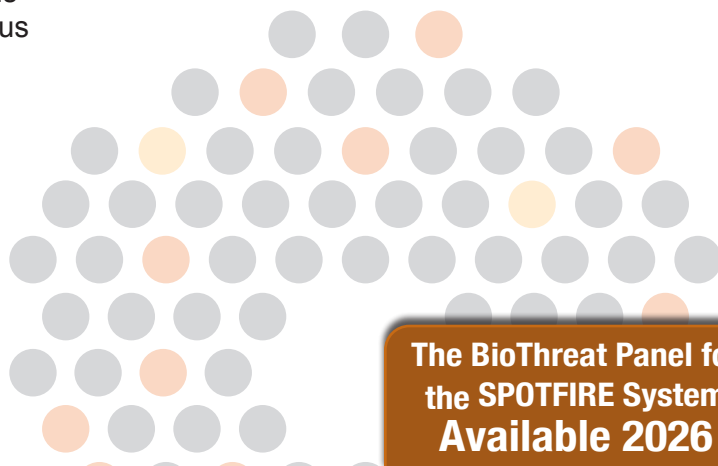
Viruses

Ebola virus (Zaire)
EEE virus
Marburg virus
Orthopox virus
Variola virus
VEE virus
WEE virus



Toxin-Encoding Genes

Clostridium botulinum
Ricinus communis



16
Targets

Comprehensive BioThreat Detection

- **Multi-Use:** Used for biothreat detection and Biosurveillance.
- **Easy-to-Use:** 2 minutes of hands-on time.
- **Fully Automated:** Sample prep, amplification, identification, and reporting.
- **Single Instrument Integration:** Minimal equipment and consumables. Scalable from one to four modules.
- **Freeze-dried Reagents:** Room temperature stable.
- **More Sample Types:** Integrated sample prep removes PCR inhibitors and allows biothreat detection in challenging environmental sample types.

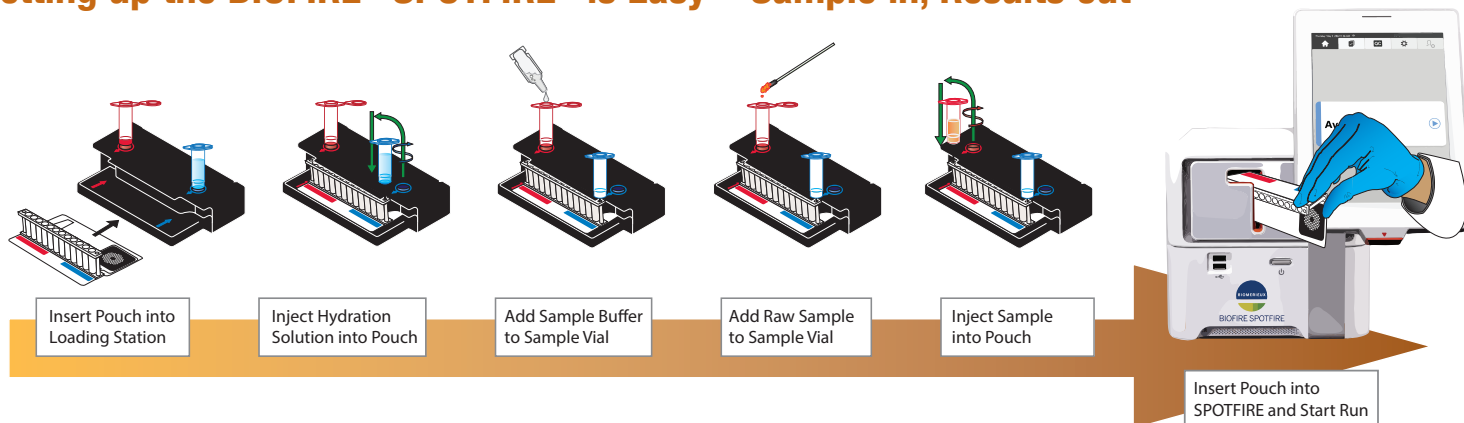


The BioThreat Panel for
the SPOTFIRE System
Available 2026

If you are interested in a free, no obligation
demonstration of the SPOTFIRE in your lab visit
www.BioFireDefense.com or call 1-801-262-3592

FREE
Demo!

Setting up the BIOFIRE® SPOTFIRE® is Easy – Sample in, Results out



Fully Automated Operation

The BioThreat pouch contains all the required reagents for sample preparation, reverse transcription-PCR, PCR, and detection in a freeze-dried, room temperature stable format.

Prior to a run, the operator injects hydration solution and the unknown sample into the pouch. The SPOTFIRE instrument does the rest.

First, the SPOTFIRE extracts and purifies all nucleic acids from the unknown sample. Next, the instrument performs a nested multiplex PCR. During the first-stage PCR, the SPOTFIRE performs a single, large volume, massively multiplexed reaction. Last, individual singleplex second-stage PCR reactions detect the products from the first stage PCR.

Using endpoint melting curve data, the SPOTFIRE software automatically generates a result for each target.

Easy-to-Read Reporting



BioThreat Panel
PCR Test



Run Date:
2025-02-27

Sample ID:
BTDEM 0225

Operator:
Ryan G

Results:

Detected: *Bacillus anthracis*

Bacteria

Detected ✓ *Bacillus anthracis*
Not Detected *Brucella melitensis*
Not Detected *Burkholderia mallei* / *pseudomallei*
Not Detected *Coxiella burnetii*
Not Detected *Francisella tularensis*
Not Detected *Rickettsia prowazekii*
Not Detected *Yersinia pestis*

Viruses

Not Detected Ebola virus (Zaire)
Not Detected EEE virus
Not Detected Marburg virus
Not Detected Orthopox virus
Not Detected Variola virus
Not Detected VEE virus
Not Detected WEE virus

Toxins

Not Detected *Clostridium botulinum*
Not Detected *Ricinus communis*

Pouch Type:
BioThreat Panel

Pouch Serial No:
02272025

Pouch Lot:
250202

Internal Process Controls:
Pass

Sample Type:
Sample

Instrument:
SM02732

Panel Specifications

BioThreat Panel

Part No: RFIT-ASY-0094

Sample Types	Liquid, Powder, and Surface Swabs
--------------	-----------------------------------

Sample Volume	300 μ L / 0.3 mL
---------------	----------------------

Tests per Kit	6-Pack Kit
---------------	------------

Reagents

- Freeze-dried in durable plastic pouches
- Room temperature storage 18-25 °C / 64-77 °F

BioFire Defense is authorized to sell the BIOFIRE® FILMARRAY® and BIOFIRE® SPOTFIRE® Systems and Panels manufactured by BioFire Diagnostics, LLC, a bioMérieux company.

Patents: www.BioFireDefense.com/legalnotices